



QUANTA

MAGAZINE

**VISIT OUR WEB SITE AT
WWW.QUANTA.ORG.UK**



**Volume 28 - Issue 2
March 2011**

Information on the Association

Membership of QUANTA, the independent QL user group, is by annual subscription. The Membership Secretary can supply full details. Copies of the association's constitution & annual accounts are available from the Secretary. There is an extensive software library. There are active national subgroups. Details are given in the Member's Guide and in this magazine.

QUANTA Committee - 2010/2011

Chairman	Sarah D. Gilpin	181, Urmston Lane, Stretford, Manchester. M32 9EH	
	Email: chairman@quanta.org.uk		Tel: 0161 865 2872
Secretary	Alison Southern	40, Distaff Road, Poynton, Cheshire. SK12 1HN	
	Email: secretary@quanta.org.uk		Tel: 01625 850067
Treasurer, Membership Secretary & Missed Issues and Acting Magazine Editor	John Gilpin	181 Urmston Lane, Stretford, Manchester. M32 9EH	
	Email: treasurer@quanta.org.uk		Tel: 0161 865 2872
	Email: membership@quanta.org.uk		
	Email: editor@quanta.org.uk		
Assistant Librarian	David Buckley	136, Denton Lane, Chadderton, Oldham. OL9 8PS	
	Email: asstlibrarian@quanta.org.uk		Tel: 0161 622 1600
Helpline, Librarian & News Editor	Dilwyn Jones	22 Erw Las, Coetmor New Road, Bethesda, Gwynedd. LL57 3NN	
	Email: helpline@quanta.org.uk		Tel: 01248 601599
	Email: librarian@quanta.org.uk		Mobile: 07749-643 922
	Email: news@quanta.org.uk		
Web Master	Dan Abbott	All contact with Web Master by email please.	
	Email: webmaster@quanta.org.uk		
Web Administrator	Keith Dunbar	44, Dalton Avenue, Stretford, Manchester. M32 9TP	
	Email: webadmin@quanta.org.uk		Mobile: 07789 483 800
Back Issues Requests	Basil Lee	31 Fairdale Gardens, London. SW15 6JW	
	Email: backissues@quanta.org.uk		Tel: 0208 789 1976

QUANTA reserves the right to publish, reject or edit any material submitted. The opinions expressed are solely those of the contributors. Member's private small ads - free (up to 50 words). Non-members private small ads (and members after 50 words) 50p per 10 words or part thereof. Terms strictly paid up-front with order. Receipt if requested. All copyrights and trademarks are hereby acknowledged.

QUANTA Magazine

CONTENTS

COPY DATE for next issue.....	3	
EDITORIAL	Sarah Gilpin.....4	
COMMITTEE PRECIS	Alison Southern.....4	
CHAIRMAN'S NOTES	Sarah Gilpin.....5	
ANOTHER CONTRIBUTION	Lee Privett	6
FEEDBACK	Steve Poole	10
CAPTION COMPETITION.....	Dilwyn Jones.....	11
QUO VADIS DESIGN.....	Advert.....	12
QUANTA HELPLINE - Zip & Unzip...	Dilwyn Jones	13
THE TIME MACHINE	Steve Poole.....	18
THE FORUM QUESTIONS	Sarah Gilpin.....	21
JOCHEN MERZ SOFTWARE.....	Advert	22
ANNUAL GENERAL MEETING SECTION		23-42
Proxy Forms		33
Accounts		35
FOR SALE	John Butterworth.....	42
QUANTA NEWS	Dilwyn Jones.....	43
RWAP SOFTWARE.....	Advert.....	46
QUANTA HELPLINE - Q & A	Dilwyn Jones.....	51
QUANTA POSTER		56
LIBRARY CORNER	Dilwyn Jones.....	57
SUB GROUPS		61
QL TODAY.....	Advert.....	64

COPY DATE for APRIL/MAY 2011

ISSUE is:

5TH APRIL 2011

Please ensure that your copy reaches the editor on or before that date. Copy on Paper or Magnetic Media or by Email.

All Contributions are Welcome.

Copy on Microdrive or Floppy Disk or CD to be accompanied by hard copy printout.

Copy by Email to - editor@quanta.org.uk

This Magazine and all the articles etc. within it are copyright © QUANTA 2009 unless otherwise stated. Reproduction and redistribution in any form is not allowed without the express written permission of the publisher. All copyrights and trademarks are hereby acknowledged.

This issue of the QUANTA magazine is an additional issue to include the Annual General Meeting information. Last year we published a separate booklet with all the annual reports and the proxy forms. This year there was so much material for the Feb/March magazine that we have decided to issue a complete magazine.

I learnt a great deal about PagePlus and editing magazines with the February issue, I hope that this issue will take less time and be a better magazine. The central Annual General Meeting section will, as usual, be a pull out.

This issue includes some of the articles that we were unable to fit into the February issue. Dilwyn Jones has also sent us some more items of News and Helpline. We have articles from Steve Poole and Lee Privett. There is information on the Forum we will hold on Sunday 17th April at 11.00am. We hope that members who are unable to come to Manchester will forward their thoughts and views on the questions to be discussed to:

committee@quanta.org.uk

before 9th April 2011. This will enable the Committee to make enough copies for those attending the AGM workshop.

We are still looking for an editor for the magazine.

COMMITTEE PRÉCIS

Alison Southern

The QUANTA committee held a face to face committee meeting on February 12th 2011. To summarise the meeting, we discussed the following points: the AGM 2010; events over the past year; membership numbers; the need to review the level of the subscription, with a view to the annual loss in the region of £500 which is likely to rise with inflation; the nominations received for the committee 2011-2012; plans for the AGM and workshop 2011, including Sarah's suggestion for an open forum to discuss matters before the AGM; an update on the magazine, which Sarah is producing in the interim while we have no editor; an update on the website and finally, the question that has produced so much discussion on the ql-user list, the need to rewrite the constitution.

There is good news on the website front too, the technical problems we have been struggling with seem to have been resolved and we hope to have a demo version of the site at the AGM. Again any help with content will be gratefully received, as that is one of the things that take time to produce.

The Committee meeting held in February, as normal, discussed the reports for the Annual General meeting. Alison Southern confirmed that we had seven nominations for Committee, with a volunteer, Keith Dunbar, prepared to take on the role of Treasurer/Membership Secretary. Dilwyn Jones is resigning as Librarian but remaining on the Committee in his other roles of News Editor and Helpline; the position of Librarian will be taken on by Dave Buckley. A new nomination to the Committee is Lee Privett. These nominations will be put forward for approval by the members at the A.G.M.

It has been decided to hold a forum on Sunday 17th April at 11.00 am before the Annual General Meeting to discuss ideas on a couple of important items.

The first item is the current Constitution and how it can be improved to make it more easily understandable. A number of comments have been made on the ql-users list regarding QUANTA Constitution and its relevance to the current level of membership and modern technology. I am asking any member who is interested in having their views taken into consideration to join us in Manchester and for those unable to attend to send their views to:

committee@quanta.org.uk

before April 9th 2011.

The second item is regarding the rate of subscription. The £14.00 membership subscription has remained unchanged for many years. In recent years the income from subscriptions has not covered the expenditure of QUANTA, the shortfall has largely been made up by the sales of second hand goods through the good offices of Rich Mellor. Expenditure has been reduced in recent years by limiting the number of face to face Committee meetings to two or three a year and other matters being decided by e-mail meetings. The fact that the majority of the current Committee live in the northern half of England has reduced the distance travelled to meetings, further reducing overall expenditure. Unfortunately there is no room for reducing the costs of producing the magazine. Has the time come to increase the subscription? Do you feel that subscriptions should be increased, and if so by how much? Suggestions have variously been made that a reasonable subscription could be either £20.00 or £25.00 per year.

I hope that you will attend the A.G.M. and make your voice heard at the forum, although those that are unable to attend can forward their views and comments on the above two points to:

committee@quanta.org.uk

Any comments put forward in any other medium or through any third party will not be taken into consideration (including ql-users list).



'Real World Attributes' in Computer Games

As the industry front-runners in computer game design strive, worldwide, to achieve full on A.I. (Artificial Intelligence) and making the graphics looking so realistic, it is becoming difficult to differentiate between what we see on the computer screen and real life. The 'look and feel' of computer games that start this process of disbelief and the relationship of human-computer interface are key to our acceptance of this situation. In computing terms development of simulation software sometimes calls for 'real world

modelling'. What this actually means, is that rather than reproduce an object directly, you breakdown the object in to its basic component parts, reproduce those parts and combine them in the correct order to recreate the object. In music technology terms we call this physical modelling, synthesis where equations and algorithms are used to simulate a physical source of sound. In games of chance, for example the rolling of a dice (singular die) has a fixed range of outcomes i.e. whole numbers between 1 and 6. This can be easily, but poorly, represented in computer programming by utilising a random command and setting the parameters limiting the resultant number.

Typically in a 'BASIC' programming language this would look like

Variable = RND(5) + 1 or **Variable = RND(1 to 6)**

Where

Variable is a temporary store you can hold numbers in the computer

RND is a built in function of the computer programme

In some BASIC interpreters the number '5' is passed to the function **RND** so that it generates a number between '0' and '5' (computers always count '0'), therefore '1' is added to the result so that the minimum number is

QUANTA Magazine

always '1' and the maximum number is always '6'. In SuperBASIC/ S*Basic the range can be given within the brackets.

The result of the equation each time the programme is run will replace the number in the Variable store with a number between 1 and 6 exactly the same as a die.

But that's not the whole story

No it's not exactly the same, as the code will actually generate a number that is several digits long, here is a random number generated in a spreadsheet such as Microsoft Excel

5.556616439

Unless told otherwise most applications in a computer will use 'floating point arithmetic' so we have to add another function of the computer language to display this as a whole number. This is INT short for integer making any number a whole number. Hence when applied to the above floating point number, the result is '5' (Spreadsheets tend to always rounds down). Try this in Psion's Abacus

A1 contains 5.5134567 (Abacus does not have the RND function)

A2 contains INT(A1)

A2 will then show 5 on screen



The table below shows a slight more processed number crunching exercise that you can try yourself. The top row is what you need to enter and row two shows what it will look like once you have entered the cell information (the format changes slightly depending on the spreadsheet you are using but hopefully you get the picture.

	A	B	C	D
1	0.7794357408	A1*6	B1+1	=INT(C1)
2	0.7794357408	4.676614445	5.676614445	5

QUANTA Magazine

So do we have a randomly generated number between 1 and 6 representing the throw of a die?

Well we definitely have a random number generating the outcome or result of the die but not the throw and this is where real world attributes can be applied.

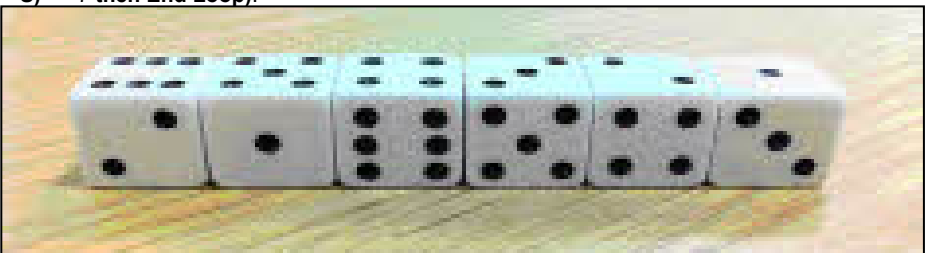
The throwing of the die includes certain factors that can be taken in to account and as each factor is discussed here, you will see a piece of code in brackets that represents that factor which is used in the example program at the end of this article. The first of the factors is that when you throw a die (ignoring edges and corners) you start with face number, the first number of the die that all other numbers will then follow, this is chosen consciously or subconsciously by the thrower (StartFace).



The next factor to consider is the strength of the throw, i.e. how long the die it will travel before it settles on a number (LengthOfRoll).

The third definable factor used in this example is the physical law of the die itself, each face of the die is a whole number between 1 and 6 and they are place in a specific order, so the face opposite 6 is 1, opposite 5 is 2 and the face opposite 3 is 4. You will notice that adding these opposite faces will always add up to 7 ((Num + StartFace) <> 7).

In a rolling die the face from one number will turn to only one of four possible others, not itself and not the face opposite. So if the face at one point of the roll was say 3 then the next face to be part of that roll would be either 1,2,5 or 6, it cannot possibly be 3 as it is rolling away from that face and cannot be 4 as at best that is at least two turns away (If Num <> S AND (Num + S) <> 7 then End Loop).



QUANTA Magazine

The final clever bit of coding used in this example is recursion, QL Basic allows functions that you call within themselves, therefore a line of code can be written so that the function can 'call' itself within the function (if Lot > 0 then Die (Num, Lot)).

The way it is used in the example below is that the function turns the die once and then checks to see if the length of the roll is zero (meaning finished), if it is then it returns the number to the program (Return Num). If it isn't zero then it 'calls' itself again but with the length of roll reduced by one (Lot = Lot-1), it keeps doing this until zero is reached turning the die each time.

This means that the numbers produced by this program would follow some of the physical rules as if you would be throwing the die yourself.

The resultant code could look like that shown below however this is just the start as there are plenty of other physical factors yet to be taken in to account such as the roundness of the edges of the die which also affects the length of roll.

```
100 REMark =====
110 REMark Die Another Way
120 REMark Lee Privett January 2011
130 REMark a re-newbie back to the QL
140 REMark =====
150 :
160 CLS
170 PRINT "Applying Real World Attributes"
180 PRINT "====="
190 :
200 StartFace =          :REMark this is the user choosing the start face of the die
210                               :REMark this could be made random by StartFace = RND(1 to 6)
220 LengthOfThrow = 50    :REMark the number of turns of the die, change value to suit
230 Rdn = Die(StartFace, LengthOfThrow) :REMark this calls the function, the result
in a variable
240 PRINT "Random Die Number = ";Rdn    :REMark this prints the final die face value
250 STOP
260 :
270 REMark =====
280 REMark This function emulates some of the
290 REMark real world attributes of throwing
300 REMark or rolling a die to achieve
310 REMark a realistic random process of
320 REMark getting a number from 1 to 6
330 REMark =====
340 :
350 DEFine FuNction Die(Sf, Lot)
360   LOCAL S, L, Num          :REMark local variable setting as this function is
370   S=Sf                    :REMark called recursively and without which some strange
380   L=Lot                    :REMark effects occur, especially in other emulators.
```

QUANTA Magazine

```
390 REPEAT loop :REMark start the loop
400 Num=RND(1 TO 6 :REMark get a random number between 1 and 6
410 IF Num<>S AND (Num+S)<>7 THEN EXIT loop :REMark this checks that
the next number in the sequence
420 END REPEAT loop :REMark is not the previous number nor the other
430 PAUSE 1 :REMark number on the opposite face
440 Lot = Lot -1 :REMark reduce the throw length by one
450 IF Lot > 0 THEN :REMark check to see if the length of throw is finished
460 RETURN Die(Num,Lot) :REMark if not then call the function again with the
470 ELSE :REMark current number and one less throw length
480 RETURN Num :REMark return the final face number of the die
490 END IF
500 END DEFINE :REMark Pause is added for an aesthetic delay depending on 'Lot'
510 :REMark add this line to see all the numbers I sequence
520 :REMark 455 PRINT Num,S,L
```

End of listing

FEEDBACK

Steve Poole

Computers will need much more time and development to match human or animal brains for one simple reason : Brains contain a colossal number of input channels and parallel and arborescent processing circuits. Information passes through innumerable chains of neurones, which possess hundreds of dendrites, which in turn connect to hundreds or thousands of other neurones in hundreds or thousands of processing centers. These dendrites cause the neurones they interact with to behave in different ways, reinforcing or weakening the different neurone's activity. The figures involved are so colossal that they are simply inconceivable to us. Yet all this happens within a sort of complex jellyfish weighing less than a kilogram, the whole lot coded onto about a meter-long strand of protein at birth. Anyone beat that for compression?

This activity is feedback at all levels. OK, so supercomputers are massively parallel, but incorporating feedback at all levels is just physically impossible with current technology. Feedback has been studied by system's experts for a long time and forms the basis of simple SERVO SYSTEMS, used for example by tracking stations. Feedback is also known in electronics as that terrible harsh whistle you get when microphones form closed loops when badly situated in regard to loud speakers.

Many writers complain that they never get any feedback from readers. I have generally found this to be the case, but no feedback is better than negative reactions. But feedback is vital in, for example, the scientific community or indeed to politicians, but most public opinion polls show that people seldom react. If Quanta and QL Today are to continue, they really

QUANTA Magazine

do need more feedback from readers. I found it very stimulating when readers responded to the editor on certain subjects, and greatly enjoyed the exchanges, forcing me to react in consequence.

So I am now looking for someone to replace me as a contributor. From conversations at shows I know that many people who never put pen to paper often have very interesting subjects to converse about. Believe me, once you start writing, it soon becomes a pleasure, especially as it forces you to sort your ideas out and helps you personally progress. So on behalf of your (extremely) hard-working Editor, please don't be shy, make a start and contribute something. I am sure we will all be delighted to read of your QL experiences. As a first subject, why not review one of the programs on the demo-disk. That other Quanta beaver, Dilwyn, is looking for volunteers. Or, revise Jan Jones's excellent SuperBASIC Handbook section on parsing diagrams where you will see how feedback is the basic logic of the language. If you are looking for a project, look at 'ELSE' and try to modify the parsing diagrams so that ELSE only feeds back as it should.

Remember, democracy cannot survive without efficient feedback!
So the magazines are in your hands....

CAPTION COMPETITION

Dilwyn Jones

Dilwyn has sent in the picture below as a Caption Competition and has offered a QL Games CD or a Launchpad as a prize. So get your thinking caps and send captions to:

committee@quanta.org.uk



The winner will be announced at the A.G.M. and in the April/May magazine.

QUO VADIS
DESIGN

Independent Information
Technology Services

www.ql-qvd.com

The screenshot shows the Quo Vadis Design website. At the top left is the logo 'QUO VADIS DESIGN' and the tagline 'Independent Information Technology Services'. To the right is the text 'QL/QDOS/SMSQ/E Software'. Below this is a red navigation bar with links for 'Home', 'Products', 'Support', 'Company', and 'Contact'. The main content area is divided into three columns. The left column has a 'Welcome' section with a paragraph about the company's history and a photo of a computer keyboard. The middle column has a 'News' section with two items: 'QVD QL News Blog - keep up to date' and 'Quo Vadis Design Website Launched'. The right column has a 'FEATURED PRODUCT' section for 'QPG II' software with a 'BUY NOW!' button. At the bottom of the screenshot, there is a copyright notice and a set of navigation icons.

QL/QDOS/SMSQ/E Software

Bruce@ql-qvd.com

Quo Vadis Design
38 Derham Gardens
Upminster
RM14 3HA
UK

Tel: +44 (0)20 71930539
Fax: +44 (0)870 0568755

Check the QL News Blog on
our website for updates.

www.ql-qvd.com/blog



Subscriptions taken online

QUANTA Magazine

The basic layout of Zip Manager is broadly similar in principle to that of Archivers Control Panel. It has two main windows, one showing the content of a zip file (left hand window, blank in Figure 1), the other showing the content of a drive/directory holding files to be zipped or files which have been extracted from a zip file. Adding files to the zip file is as easy as highlighting them (click on the filename) in the right hand window, then click on the left facing red arrow in the middle. Extracting a file from the zip file is as easy as highlighting the files to be extracted in the left hand window (the zip file) and then clicking on the right facing red arrow in the centre of the display.

Setting It All Up

The Zip Manager program has a level 1 config block, which means you can set the defaults for the program using the good old Config program supplied with so many pointer driven programs.

You can see that there are a few loose items dotted around the display – Encrypt, Paths, Sub-directories, Toggle unzip format status, Use “quoted” filenames and so on. The default settings you see when the program starts can be set using Config.

Exec the Config program, and tell it to configure the program file called ZipMan_obj. There are 19 items you can set in all, as listed in page 1 and 2 of the manual. It might take you a little while to establish settings which you prefer and this is something that using the program over time will help you determine which settings are best for you.

The two most important settings which have to be gotten right are items 10 and 11. These tell Zip Manager where you have stored the Zip and Unzip program. Zip Manager cannot work without these two programs!

The next most important setting is number 4. This is the name of the drive which will hold zip's temporary files. As long as your system has a ramdisk (most do these days) this will usually be ram1_, or you will have to specify another drive with plenty of space if your system really does not have a ramdisk. One point to note: if your system has a static ramdisk, the type whose size is fixed by a FORMAT command, you will need to ensure it has plenty of space otherwise the zip programs might get “strangled” by not having enough space to work in.

QUANTA Magazine

Using Zip Manager

The icons across the top are pretty standard QL program icons. The first (the Move icon) lets you move the Zip Manager program around the screen. The second is a Resize icon, which lets you enlarge or reduce the program's display within reason. The third, which might appear as a blue down arrow or 'Zzz' logo depending on the system it's used on, puts the program to sleep in the QPAC2 button frame if that is present. The SP icon (System Palette) selects one of four possible colour themes on a WMAN2 system. Clicking on it cycles round the next system palette number, then when it's gone past the fourth goes back to the first. If you are in the habit of using 'colour themes' to give your programs a standardised appearance (e.g. I use a grey theme for my programs) e.g. by using Wolfgang Uhlig's Q-Coco program, Zip Manager will use these colour themes (also known as System Palettes). Hence the grey appearance of the program display shown in Figure 1 – which is of course easier to appreciate if you are reading this article in the electronic colour PDF version of the magazine – as I use a grey themed system palette on my system. If your system is not able to display high colours, it will display in the standard 4 colours if you are using a MODE 4 system.

The fifth icon (on the right, at the top) refreshes the program display, which might be handy if some other program has managed to corrupt it. The © icon displays a brief copyright screen and the 'X' icon lets you quit from the program.

Below these are a number of loose items with rather cryptic names in some cases:

ENCRYPT – lets you add a password to a zip file. This means nobody can open the zip file to extract the files unless they know the password (or they are very talented and determined hackers!).

PATHS – Specifies if the full path name or just the pure filename is stored in the zip file. Suppose that we are zipping a series of Quill _doc files from a directory called win1_quill_. If we want the zip file to remember that they came from win1_quill_ so that they can later be unzipped to the same place, we highlight this. So WIN1_QUILL_myfile_doc would be stored as that, otherwise it would just be stored as myfile_doc. This might be useful for programs which expect their files to be stored in a particular directory. On

QUANTA Magazine

the other hand, Xchange Quill files can be loaded from pretty well anywhere, so this can be left unset.

SUB_DIRECTORIES – Zip can archive files in the current directory and optionally from any sub-directories contained within the current directory automatically if this is set. If not highlighted, this item means that zipping will only process files in the current directory and NOT any further sub-directories contained in the current directory.

QDOS FILE HEADERS – this must be highlighted if the file contains QL executable programs, or the file headers will be lost if this is not highlighted. When not highlighted, it will generate a PC-style zip file without any QL headers. I rarely use this myself, but it might come in useful if the Unzip program on the target computer does not understand QL file headers, for example.

TOGGLE UNZIP FORMAT STATUS – Whether or not the ‘_’ and ‘.’ in filenames are converted. Most files stored on a PC into a zip file will have filenames ending with a suffix starting with ‘.’, e.g. file.txt. Normally, you might expect QL unzip to automatically convert this to file_txt but if it is important that ‘.’ and ‘_’ are not swapped, you can use this option to prevent that.

TEMPORARY FILES PATH – normally RAM1_ as mentioned above, but can be changed temporarily with this option if required.

<- Move one step back up the directory name path, e.g. from win1_quill_docs_ back to win1_quill_

Both the left and right main windows have icons for Refresh, All, None and Sort. Refresh redraws the filenames list for that window. ALL selects (highlights) all filenames in that window, NONE deselects them all, and SORT obviously lists them into alphabetical order.

Below these are the main drive and zipfile selections boxes. Left clicking on a box (HIT - move the pointer over the box, then click on the left hand mouse button or press the SPACE bar) lets you type something into the box, whereas right clicking (DO – move the pointer over the box and press the right hand mouse button, or press ENTER) brings up a file selection menu common to most of my programs.

QUANTA Magazine

USE “QUOTED” FILENAMES – Sometimes when using Zip, filenames containing some characters, such as spaces, can be problematical. Example: QL JS ROM_pff would cause a problem as Zip would try to zip these as three separate files called “QL”, “JS” and “ROM_pff” which of course would fail. By putting quotes around the filename containing such awkward characters, it forces it to see what is between the quotes as a single filename “QL JS ROM_pff”, although this is obviously bad practice. Some older programs put spaces in filenames, so this can be used to work around such a limitation.

Under the left hand window there are 4 commands which act on a zip file:

CATALOGUE – displays a more detailed listing of file details of selected files – lists file size, compression method and ratio, date and time.

DELETE – selected files are deleted from the archive. Use with caution – deleted files cannot be recovered.

VERIFY – A quick check on the archive , with errors in selected files detailed on the screen.

VIEW – this lets you view a file contained within the archive. Three viewing methods are available:

1. Zip’s own internal viewer, which displays 22 lines of text irrespective of program window height. You press space bar or enter to move on to the next 22 lines, or q to quit.
2. Associated editor. Within the config system you can specify which program to use to view files (item 12 when configuring). Usually this will be an editor program which can display both text and binary files (Ralf Rekoendt’s S_Edit program makes a good choice for this).
3. FileInfo II – this will feed the file to FileInfo II if you use this, so the file can be viewed using the associated program if set up within FileInfo II (e.g. Xchange to view Quill _doc files or Abacus _aba files).

QUANTA Magazine

I hope you'll find that Zip Manager is a nice, simple and convenient program to use once you have set it up on your computer. You can download it from:

<http://dilwyn.me.uk/arch/index.html>

and you can get Zip and Unzip programs from the same page, or direct from Jonathan Hudson's website at:

<http://www.daria.co.uk/qdos/>

That theoretically concludes this series of articles about Zip and Unzip and the various "front end" programs, but if you, the readers, feel there is anything I haven't adequately covered, or missed out altogether, please do get in touch and I'll see what I can do if a future supplementary article is required.

THE TIME MACHINE

Steve Poole

For many years I have been writing software for Quanta and QL Today, dealing with every computing subject I came across. But inspiration is finally running out, until I realised I had never seen a program based on time machines.

Time is defined by Einstein as an integral part of space-time which is curved, creating gravity as mass slides along the shortest routes through the void. If time were straight, it would be infinite, but as just about everything we can observe is curved, time may be circular, looping back on itself and therefor the universe would be a closed finite unit. So therefor our familiar Euclidian Axes may not be straight, but curved, perhaps even chaotically curved, giving randomly wrapped multi-dimensions to matter and energy, for which the geometry would be horrendous.

But that is as far as I shall go into the curved geometry developed by the mathematician Rieman.

I did some years ago write a program for Quanta showing what space resembles when time loops back onto itself... Interwoven Webs! But perhaps the most common idea of time travel comes from HG Well's Time Machine, where a voyager goes back and forth in time to try to change the course of history. This leads to paradoxes. For example, if you travel back

QUANTA Magazine

in time and kill your own grandfather, you will not have been born, so you could not have killed him in the first place! (Time is still subject to cause and effect!)

I decided to write a time based program as simply as possible, using the old noughts and crosses game. Two players compete in the usual way, one red and one green, each successive pawn being selected by the letter of its cell which is then numbered. You have the possibility of making a move already played by the other player or yourself, which results in the pawns of that and higher numbers being reshuffled by the QL across the board. That is, to simulate time, the game simply considers time as the pawn-order of progression!

The skill of the game is to choose the right moment to intervene in the time sequence so as to try to gain an advantage... It is not as easy as it sounds, as there is a random element applied (to simulate unforeseen side-effects) which could make you win or lose immediately.....

I originally planned to write my 'time machine' game using othello, but realised that this would take too long to finish. So I am reasonably satisfied with this program as it stands, which is the first time machine game I have seen anywhere. No doubt big firms will produce professional games in which your avatar can kill its own grandfather to disprove the theory, but in the meantime,

Happy time warping....

```
100 ::
110 REMark Time_Machine_bas, by S.Poole, v4oct2010
120 :
130 CLEAR: OPEN#1,con: OPEN#2,con
140 WINDOW 512,256,0,0: CLS
150 WINDOW 256,206,256,0: WINDOW#2, 512,206,0,0
160 PAPER 0: INK 7: CLS: CSIZE 3,1
170 PAPER#2,0: INK#2,7: ik=4
180 DIM t(9,2): ABC$='ABCDEFGHI': main
190 IF NOT win1 OR win2 THEN
200 AT 7,1: PRINT 'No winner...'
210 END IF : i$=INKEY$(#1,500): STOP
220 :
230 DEFine PROCedure main
240 draw_grid 2: draw_grid 1: Nct=1
250 REPEAT loop
260 REMark choose a cell letter:
270 IF ik=4: ik=2: ELSE ik=4: END IF : INK ik
280 AT 5,1: CLS 3: PRINT '?': AT 5,1: INPUT;i$
290 is=i$ INSTR ABC$: IF is: ELSE GO TO 280
```

QUANTA Magazine

```
300      :
310      REMark print this time number:
320      t(is,1)=ik: this_cell=t(is,2): t(is,2)=Nct
330      :
340      REMark grid square is occupied:
350      IF this_cell: recalculate_grid: Nct=Nct-1
360      draw_grid 1: Check_for_win
370      Nct=Nct+1 : IF Nct>9 OR win1 OR win2: EXIT loop
380 END REPEAT loop
390 END DEFine
400 :
410 DEFine PROCedure Check_for_win
420 RESTORE : win1=0: win2=0
430 FOR j=1 TO 8
440     READ a,b,c
450     FOR F=2,4
460         IF t(a,1)=F AND t(b,1)=F AND t(c,1)=F: winner F
470     END FOR F: END FOR j
480 END DEFine
490 DATA 1,2,3,4,5,6,7,8,9, 1,4,7,2,5,8,3,6,9, 1,5,9,3,5,7
500 :
510 DEFine PROCedure winner(w)
520 IF w=2: win1=1: colour$='red': ELSE win2=1: colour$='green'
530 IF win1 AND win2: AT 7,1: PRINT 'Bravo...Draw',: RETURN
540 AT 7,1: PRINT 'Bravo'!colour$!'player wins'
550 END DEFine
560 :
570 DEFine PROCedure recalculate_grid
580 LOCAL F: N$=''
590 FOR F=1 TO 9
600     REMark look at each cell to see if swap needed:
610     IF t(F,2)>=is THEN
620         REMark inverse the ink colour:
630         IF t(F,1)=2: t(F,1)=4: ELSE : t(F,1)=2
640         :
650         REMark get random cell number from list:
660         t(F,2)=RND(is TO Nct-1)
670         IF t(F,2) INSTR N$: GO TO 660
680         N$=N$&t(F,2)
690     END IF
700 END FOR F
710 END DEFine
720 :
730 DEFine PROCedure draw_grid(ch)
740 LOCAL ct,x,y: ct=1
750 FOR y=1 TO 3
760     FOR x=1 TO 3
770         IF t(ct,2) THEN
780             INK#ch, t(ct,1): AT#ch,y,x: PRINT#ch;t(ct,2)
790             ELSE INK#ch, 7 : AT#ch, y,x: PRINT#ch; ABC$(ct)
800         END IF : ct=ct+1
810     END FOR x: END FOR y
820 END DEFine
830 ::
```

End of listing

The forum will be divided into two halves, allowing half an hour for debate on each question. Those wishing to speak must give their names to the doorman as they enter the room and they will be allocated one minute to present their arguments for or against any of the written suggestions after which time they will be stopped.

1. The QUANTA Constitution

Suggestions received by April 9th 2011 will be circulated to all attendees before the forum meeting and will NOT be read out at the meeting. Notes will be made of all points of view raised and written up for the April/May magazine for our members consideration. Committee looks forward to any points of view sent to:

committee@quanta.org.uk

The amended constitution will be presented as a Special Resolution at the A.G.M. 2012 to take immediate effect.

2. QUANTA Subscriptions

There has never been an increase in the membership subscription since QUANTA was formed. Below are some facts and figures as to why it is most important that an increase is made.

Facts and figures showing why there is a need for increase.

1. A 1% per annum increase in subscriptions since 1984 to 2011 would result in a current amount of £18.31
2. A 2% per annum increase would result in a current amount of £23.00
3. Average cost of printing & postage per head in 2010 was £12.28
4. Cost of insurance, A.G.M. and committee expenses was £5.63 per head.
5. This equalled a total cost per head of £17.91 per head.
6. Income from subscriptions was on average £14.00 per head
7. Loss per head £3.91 was reduced by donations to £3.00.
8. Costs will rise over the next 2 -3 years, in postage, petrol and printing.

QUANTA Magazine

Jochen Merz Software

Kaiser-Wilhelm-Str. 302
47169 Duisburg, Germany

Fax +49 203 502012
Email: SMSQ@J-M-S.com

QPC2 Version 3 + SMSQ/E Software QL-Emulator for PC's		EUR 59,90
QPC2 Version 3 - Upgrade from QPC2 Version 2		EUR 19,90
QPC2 Version 3 - Upgrade from QPC2 Version 1		EUR 39,90
SMSQ/E ATARI or (Super)GoldCard or QXL		EUR 39,90
QPC Print - printer emulation driver for QPC		EUR 39,90
Agenda Agenda program for WMAN and Prowess	[V1.09]	EUR 14,90
Suqcess Database front-end for WMAN	[V2.05]	EUR 19,90
QD2003 Pointer-Environment-Editor	[V8.01]	EUR 39,90
QD2003 Upgrade from QD98	[V8.01]	EUR 9,90
QD2003 Upgrade from previous versions	[V8.01]	EUR 19,90
QMAKE Pointer-driven MAKE for GST/Quanta Assembler	[V4.31]	EUR 14,90
BASIC Linker	[V1.21]	EUR 14,90
WINED Floppy/Harddisk Sector- & File-Editor	[V1.26]	EUR 14,90
Fifi II File-Finder - Extremely useful	[V4.31]	EUR 14,90
Fifi II Upgrade from Fifi V1, 2 or 3	[V4.31]	EUR 9,90
EPROM Manager	[V3.02]	EUR 14,90
QSpread2003 Spreadsheet Program	[V4.04]	EUR 39,90
QSpread2003 Upgrade from QSpread2001	[V4.04]	EUR 9,90
QSpread2003 Upgrade from V1	[V4.04]	EUR 29,90
QPAC I Utility programs	[V1.11]	EUR 19,90
QPAC II Files, Jobs & other Things	[V1.45]	EUR 29,90
QTPY II Spell checker	[V2.17]	EUR 24,90
QPTR Pointer Toolkit	[V0.30]	EUR 39,90
DISA Interactive Disassembler	[V3.04]	EUR 29,90
typeset-ESC/P2 text87 driver for all ESC/P2 printers (incl. Stylus)		EUR 24,90
CueShell	[V2.14]	EUR 29,90
CueShell for QPC	[V2.14]	EUR 20,00
SER Mouse software mouse driver for serial mice		EUR 10,00
EasyPTR Version 4	[V4]	EUR 59,90
EasyPTR Version 4 - Upgrade from earlier versions	[V4]	EUR 39,90
text87plus4patch - now for QPC, QXL, Q40, Q60, Aurora		EUR 10,90
QDT - QL Desktop program		EUR 59,90
QMENU Version 8 - New! with new, printed Manual	[V8.02]	EUR 24,90
QMENU Version 8 - Update from earlier Versions, also with printed manual		EUR 17,90
QMENU Version 8 - New/Update for QL Today subscribers, with prtd manual		ONLY EUR 14,90

Please add EUR 4,50 for postage EUROPE, or EUR 6,50 for postage REST OF WORLD

We accept VISA, MasterCard & Diners Club online and offline! Amex only by mail or fax, not email!

New payment methods for our customers: Money transfer to "local" account in many countries!

- Deutschland: Jochen Merz, Account 493 50 43L Postbank Essen, BLZ 360 100 43
- Österreich: Jochen Merz, Account 85055317, PSK Wien, BLZ 60000
- Switzerland: Jochen Merz, Account 60 690080-4, PostFinance, Clearing Nr 09000
- The Netherlands: Jochen Merz, Gronummer 3258439, Postbank NL Amsterdam
- and from all other countries in EUR with IBAN and BIC to account
Jochen Merz, Deutsche Postbank AG, IBAN: DE21 3601 0043 0611 1004 37 / BIC: PBNKDEFF 360
- UK customers can pay in £ (convert EUR prices above to £ by multiplying with 0.90) to
Jochen Merz, Account 83795396, Citibank UK, Sort code 30-00-45
or send cheques in £ - no fee for UK sterling cheques!
- US customers can pay in US\$ (convert EUR prices above to US\$
by multiplying with 1.40) - no fee for US cheques in US\$!

Cheques payable to Jochen Merz only!

Price list valid until 31st of March 2011

QUANTA Magazine
QUANTA A.G.M. 2011

NOTICE CONVENING
ANNUAL GENERAL MEETING 2011

Notice is hereby given that the Twenty-seventh Annual General Meeting of QUANTA will be held at "The Endeavour", 3rd Davyhulme (Lostock) Scout Headquarters, Conway Road (Off Lostock Road), Davyhulme, Manchester. M41 0TF on Sunday 17th April 2011 at 2 p.m. for the following purposes:

- 1. To receive the Annual Report of the Committee.**
- 2. To receive the Annual Accounts and Auditor's Report.**
- 3. To receive the Membership Secretary's Report.**
- 4. To elect members of the Committee.**
- 5. To appoint an Auditor and authorise the Committee to fix his/her remuneration.**
- 6. To put to the members a change to the Membership Subscription Rate.**
- 7. To put to the members a proposal that the QUANTA Constitution should be rewritten and be presented for approval to the members at the A.G.M. in 2012.**

The review of our achievements over the last year is disappointing. Tony Hill, who volunteered to become Magazine editor last April, found the task more time consuming than he had anticipated and was unable to continue in that post. John Gilpin, once again, filled the gap – thank you John. Dan Abbott and Keith Dunbar worked hard behind the scenes to improve the QUANTA website, but encountered unforeseen difficulties with our current web server.

John Gilpin is resigning from the Committee and is standing down from his posts as Treasurer/Membership Secretary and Editor after an additional year co-opted onto Committee. This is in accordance with section 5 of the constitution. John has been an active member of QUANTA for many years. The QUANTA magazine under his editorship has improved in both content and quality, I hope any future Editor can continue to maintain the magazine or improve it further. John has been Treasurer of QUANTA for a number of years and during that time has worked hard to reduce the overheads and other costs to QUANTA. Thank you, John.

The Committee's efforts to provide a central location for the A.G.M 2010 did not result in any improvement in attendance, with a very disappointing 17 members attending. This year we have moved the venue back to Manchester, with a two day workshop, forum and A.G.M and NEMQLUG have volunteered to organise the event and to arrange a Chinese banquet for those interested.

Committee have discussed the possible re-drafting of the QUANTA Constitution and have decided that this is not a process to be hurried or carried out without participation from the members. Therefore we invite any member interested in expressing their views to do so to:

committee@quanta.org.uk

before April 9th2011.

It is also part of the Committee's remit to manage QUANTA funds and to ensure that we do not make a continual loss year by year. In previous years our income has been significantly boosted by the sale of second-hand items through Rich Mellor. Unfortunately this year our expenditure has

QUANTA Magazine

exceeded our income by approximately £500.00. We ask the members to consider an increase in the annual subscription to help minimise our losses. This will be the first increase in many years. Any views or suggestions as to whether an increase should be made and as to by how much would be welcomed by Committee by email to:

committee@quanta.org.uk

or by post to Alison Southern,(for address see inside front cover).

It has been decided by Committee that we should change web host to one that is able to support Typo 3. This is currently being done by Dan Abbott and Keith Dunbar and should be demonstrated at the A.G.M.

It has also been decided that QUANTA should buy a projector and the ancillary equipment required to enable presentations to be made at workshops, as we can no longer borrow the one we have used in the past.

We look forward to the next year.

SECRETARY'S REPORT

Alison Southern

QUANTA committee held two face to face committee meetings this year, one after the A.G.M. in April 2010 and one on February 12th 2011. All other matters have been resolved using email meetings.

Discussion has included membership numbers; the need to review the level of subscriptions (high lighted by the shortfall of income over expenditure this year); nominations received for Committee as listed in the proxy forms; plans for the A.G.M. and workshop 2011; and lack of progress with the Web site.

Sarah has suggested that an open forum should be held at 11.00am on Sunday 17th April 2011 to discuss: 1) the need to rewrite the QUANTA Constitution in clearer English and 2) any changes to the current level of membership subscriptions.

We accept that the constitution is badly worded in parts and look forward to working with members to remedy this. Therefore we are asking

QUANTA Magazine

for any input from members about the constitution to be forwarded by email to:

committee@quanta.org.uk

or by post to Alison Southern by April 9th 2011. This will enable the Committee to provide copies for members to look at during the workshop on Saturday 16th April and comment on at the forum on the morning of Sunday 17th April. We welcome all suggestions whether they are a complete rewording of the constitution or merely a clarification of certain key clauses all will be looked at and put out at the forum.

The members decide the level of Subscriptions levied at each Annual General Meeting. For many years this has remained unchanged but our costs have not. This will be the second discussion point at the forum.

There is good news on the website front too; the technical problems we have been struggling with seem to have been resolved. Further information is included in the Web Master's report.

Thank you for the one nomination I have received that is not from the current committee, it seems my complaints have not fallen entirely upon deaf ears and I hope we will be able to welcome fresh blood onto the committee at the AGM. I do hope that as many of you as possible will visit the AGM, if you can't make it please complete and return your proxy forms, we like to feel that we represent the views of all our members.

QUANTA are supporting Rich Mellor with a loan to enable him to produce more keyboard membranes. If there are any other projects around we are always willing to look at a business plan to see if we able to support them.

TREASURER'S REPORT 2010

John Gilpin

2010 has produced another unexceptional set of accounts for QUANTA although the bottom line is showing a larger deficit than previous years. During my term as treasurer I have endeavoured to keep losses to a minimum and I think that I have now got to the stage where expenditure of the essential items has reached a point where it is not practical to reduce them any further. Is it possible to do away with any of these items altogether? First of all, let me explain what these items are and try and justify any specific increases in expenditure over the last year.

QUANTA Magazine

Looking first at the Income and Expenditure Account:

Overall Income:

Overall income can now be summarised into only four categories:

1) & 2) Subscriptions & Credit Card Charges:

Subscriptions will fluctuate with any changes in the number of subscribing members. The only factor that I have any influence over is the subscription cost per head (determined annually by the Members at the A.G.M.) - See below. Credit Card Charges is the small charge that PayPal charge us on each transaction and we add a similar small charge to our members who pay using our PayPal facility. This item should show similar movements as subscriptions but on a much smaller scale since far less members pay by this method (mainly Overseas Members). It has never been intended to make any surplus from Credit Card Charges but merely to break-even against the charges levied by PayPal. This can clearly be seen by comparing the £34 income against the £28 paid to PayPal during the last accounting period.

There is some small distortion in the subscription receipts each year caused by having two subscription dates – January and July – in that the subscription renewals received for January are all included in the current year's income whereas half of those received for July are set aside (Accrued) for the following accounting period. One might argue that since this occurs every year, the accrual in any accounting period is offset by a similar amount being brought back from the accrual made in previous accounting period but experience has shown that any difference between these two figures has a distorting effect over three consecutive years trading – the previous year, the current year and the following year. This is the reason why it is not simply possible to divide the total subscriptions received by £14 (the annual subscription rate per head) and arrive at the number of members.

3) Donations:

Once again QUANTA is indebted to Rich Mellor for a large proportion of the donations received (£363) from the results of his efforts in selling any Second User items donated to QUANTA. This figure is solely dependent upon the amount of goods donated, the type of goods and hence the current demand for those items on the second user market. As the number of donated parts falls, so the (cash) income falls and I understand that Rich has virtually no remaining stocks to sell on behalf of Quanta.

QUANTA Magazine

4) Interest Received:

Due mainly to the current economic climate where interest rates are extremely low while taxation rates have retained their usual level, it follows that our income from this source is still falling. Our auditor is still making a claim for tax to be refunded from any taxation paid in previous years but the amount received is now hardly worth the effort made and the time taken in doing so.

Overall Expenditure:

The analysis of QUANTA Expenditure has always been a matter of debate at committee meetings where different committee members would like to see different headings used for different reasons like:

Take the situation of an A.G.M. taking place at a 2-day workshop.

Does the cost of the venue count as A.G.M. costs or Workshop costs? And does the attendance of committee members (travelling, overnight accommodation – B & B etc.) count as A.G.M. costs or Committee Member's Expenses?

Similarly with Committee meetings.

My argument is this: While we are obliged to hold an A.G.M. and occasional committee meetings, we are not forced to hold workshops so, events which include an A.G.M. or a committee meeting should be analysed as either A.G.M. or committee Meeting Costs whereas Workshops which do not include an A.G.M. or a Committee meeting should be analysed as workshop costs. Similarly where committee members costs for attending a meeting where all committee members are expected to turn-out should also be analysed as expenses included in the A.G.M. (or Workshop or committee meeting) costs, otherwise individual committee members expenses (editor's travel expenses related to the editing and distribution of the magazine) should be analysed as Committee members expenses. The easiest solution is to take the overall expenditure as the figure to be compared annually and the individual cost should be taken collectively as an indication only.

Two items of expenditure that can be specifically analysed are the Magazine costs (Printing and Postage). Printing costs include the printing of leaflets (Nomination and proxy forms, Member's Guide booklets, etc.). This year's printing costs cover a number of Bumper Issues of 60 pages or more and is not likely to decrease by reducing the print-run (currently about 150/170 copies) The postage cost is the figure after deduction of postage surcharges

QUANTA Magazine

received. Postage charges are likely to increase in coming years as the Royal Mail Postage Rates continue to increase which may involve greater surcharges to our overseas members in coming years. It has been suggested by our auditor, that we consider asking our members to sign their subscription and postage costs as Gift Aid and we can then claim back any tax paid on that amount.

Subgroup support is purely dependent upon the number of groups claiming this financial assistance.

A.G.M. Costs include the hire of a suitable venue and this is much higher for a public building (as in 2010) than it is to make a donation to a local Scout Group for the use of their headquarters.

While the majority of committee members live in one location the cost of face-to-face meetings (usually two per year other than the A.G.M.) is minimised by holding the meeting(s) at the home of one of the committee members.

Where no other workshops are held (other than the A.G.M.), the workshop cost is obviously Nil. Where workshops are organised by Committee, the costs would be exorbitant due to the travelling cost involved in finding, visiting and vetting suitable venues. Hence the request for one of the local subgroups to organise any workshops required, a request that seems to more often than not, fall on deaf ears.

Committee member's expenses have been minimised by reducing the constituent items (travelling etc.).

Our only item of royalties in recent years have been to GST for copies the Macro Assembler sold (now been released to the public domain).

While we do not make any claims against our public liability insurance, there has been no change in premium.

Accountancy and audit costs remain constant, the only increase being in VAT rate. The £100 (ex VAT) charge represents less than one day's work, any preparatory work done in house helping to keep the audit work required to a minimum.

Bank and credit charges are discussed in the overall income section above.

QUANTA Magazine

Although we must continue to keep our expenditure and overheads to a minimum whilst still maintaining our facilities for our members, we need to at least match that expenditure with our income in order to remain solvent in the long period.

Finally I make no apology for offering a vote of thanks for and on behalf of QUANTA members to our Auditor Mrs Armstrong who continues to give her time and advice for very little return as and when it is requested of her.

The resulting Balance Sheet shows that QUANTA made a loan of £1635 to RWAP Services over a two year period to assist in the supply of QL Keyboard Membranes.

The cash in hand £14 represents a cash payment of subscription and is still in the hands of the treasurer – until the bank paying in books are returned from the auditor.

TREASURER'S RECOMMENDATIONS:

In line with our Constitution (Clause 4.0) I think that it is now time to increase our Membership Subscription in order to reduce our losses incurred over the past few years and hence to maintain our current financial stability. The Chairman (Sarah Gilpin) at a recent committee meeting recommended that the level of the new subscription should be determined at an open forum to take place before the A.G.M. on Sunday April 17th 2011. As Treasurer, my recommended new subscription for all members would be £20 per annum plus the current Postage supplement of £5 p.a. (Europe) and £8 p.a. (Rest of the world). As is current, the new subscription rate would include second class inland postage rate for UK and NI members. I would also like to recommend introducing a discounted 3-year subscription rate of £50 for existing members and £45 for new members (£15 for 1-year new members only).

While discussing Subscription rates, I would also like to recommend that ALL subscriptions run from January (to reduce the distortion referred to above) and that those members who currently renew their subscription in July be given a subscription 'holiday' from July 2011 to January 2012 with no membership penalty. This will reduce the work required in managing the Accrual scheme referred to above and will also help to eliminate any distortion to a minimum.

The resulting annual loss for 2010 of £516 has reduced our Accumulated fund to just under £9,000.

Signed: John Gilpin

QUANTA Honorary Treasurer.

QUANTA Magazine
QUANTA INVITE ALL MEMBERS TO JOIN THEM
In Manchester
for a 2-day QL WORKSHOP and A.G.M.

Venue: "The Endeavour", 3rd. Davyhulme (Lostock) Scout
Headquarters, Conway Road, (off Lostock Road,) Davyhulme,
Manchester. M41 0TF

on

Saturday/Sunday 16th/17th April 2011 from 10.00 am. to
5.00 pm. Daily - doors open from 09:00 am.

The A.G.M. will be held at 2.00 pm. Sunday April 17th 2011.

Hotel accommodation is available if required at local hotels and Sarah Gilpin (Chairman) has details to help you arrange this.

chairman@quanta.org.uk

For directions to the venue:
Please refer to pages 41 & 42 of this Magazine

We hope that as many members as possible will attend this event in order that our newer members will have the opportunity to meet those with wider experience in all matters relating to the QL. Traders are cordially invited to attend with their products and associated knowledge and advice for our members. This will be an ideal opportunity for all members to exchange their views and ideas and to meet other members from all parts of the UK and (we hope) some from overseas too. If you have any specific queries that you would like answered, please send them with full details to Alison Southern (QUANTA Secretary) before the event in order that we can come up with the most suitable answer for you.

Alison Southern. QUANTA Secretary

secretary@quanta.org.uk

TO ALL QUANTA MEMBERS

The Proxy Form which you will find on the next page is your chance to vote at the A.G.M. on 17th April 2011 even if you can't be present on the day. It is purposely on the middle page so that you can remove it without damaging the rest of the Magazine, fill it in and return it to:

**Mrs. Alison Southern,
QUANTA Secretary,
40, Distaff Road,
Poynton,
Cheshire.
SK12 1HN.**

**To be received by her not later than 9th
April 2011.**

Remember, this is YOUR VOTE.

USE IT.

QUANTA Magazine

QUANTA ANNUAL GENERAL MEETING 17TH. APRIL 2011

PROXY FORM

I, (Block Caps)

.....

of (address)

.....

.....

..... Postcode

Hereby appoint :-

The Chairman of the Meeting or, failing him/her(see Note 1 below):

Name:

.....

Of (address)

.....

.....

..... Postcode

as my proxy to attend and vote in my name and on my behalf at the Annual General Meeting of QUANTA to be held on 17th April 2011 and at any adjournment thereof. Unless instructed to abstain, or vote for or against the resolutions (as set out in the notice convening the meeting) by placing an "X" in the box(es) below, the proxy will vote at his/her discretion.

ORDINARY RESOLUTIONS

FOR

AGAINST

ABSTAIN

1. To receive the Annual Report of the Committee.

2. To receive the Annual Accounts and Auditor's Report.

3. To receive the Membership Secretary's Report

(Continued overleaf:)

QUANTA Magazine

(continued from overleaf)

- | | | FOR | AGAINST | ABSTAIN |
|---|-----------------|--------------------------|--------------------------|--------------------------|
| 4. To elect members of the Committee:- | | | | |
| Chairman - | Sarah Gilpin | <input type="checkbox"/> | | |
| Secretary - | Alison Southern | <input type="checkbox"/> | | |
| Treasurer - | Keith Dunbar | <input type="checkbox"/> | | |
| Committee Member - | Dan Abbott | <input type="checkbox"/> | | |
| Committee Member - | Dilwyn Jones | <input type="checkbox"/> | | |
| Committee Member - | Dave Buckley | <input type="checkbox"/> | | |
| Committee Member - | Lee Privett | <input type="checkbox"/> | | |
| 5. To Appoint an Auditor and authorise the Committee to fix his/her remuneration. | | | | |
| | | <input type="checkbox"/> | <input type="checkbox"/> | <input type="checkbox"/> |
| 6. To put to the members a change to the QUANTA Membership Subscription Rate. | | | | |
| 7. To put to the Members a proposal that the QUANTA Constitution should be rewritten and be presented for approval to the Members at the A.G.M. in 2012. | | | | |

Dated this 13th February 2011

Signed: Alison Southern - Secretary

NOTES:

1. If you wish to appoint as your proxy a person other than the Chairman of the meeting, delete "The Chairman of the Meeting" and insert (in Capitals) the name and address of your desired proxy, who must be a member of QUANTA at the time of the meeting.

2. This form must reach the Secretary, Mrs. Alison Southern, 40, Distaff Road, Poynton, Cheshire, SK12 1HN, United Kingdom, on or before the 9th. April 2011.

QUANTA Magazine

QUANTA (Audited) Income and Expenditure Account For the Year Ended 31st December 2010.

£	2009 £		£	2010 £
		INCOME		
	2,460	Subscriptions		2,234
	26	Credit Card Charges		34
	1,578	"QL is 25"		0
	498	Donations		<u>363</u>
	<u>4,562</u>			<u>2,631</u>
6		Interest Received	3	
<u>2</u>		Less: Taxation (Plus refunds)	<u>-1</u>	
	<u>4</u>			<u>4</u>
	<u>4,566</u>			<u>2,635</u>
		EXPENDITURE		
	1,317	Magazine Printing Costs		1,624
	423	Magazine Postage Costs		525
	<u>50</u>	Sundry Purchases		<u>0</u>
	<u>1,790</u>			<u>2,149</u>
		OVERHEADS		
	0	Subgroup Support		100
	264	A.G.M. Costs		447
	628	Committee Meetings		20
	0	Workshop Costs		0
	400	Committee Members' Expenses		177
	-6	Royalties Payable		0
	110	Insurances		110
	4,292	"QL is 25"		0
	117	Accountancy & Audit		120
	<u>21</u>	Bank & Credit Card Charges		<u>28</u>
	<u>5,826</u>			<u>1,002</u>
		(3,050) SURPLUS / (DEFICIT) FOR THE YEAR		<u>(516)</u>
		(3,050) To/(From) QUANTA Accumulated Fund		(516)

John Gilpin (Signed)
Honorary Treasurer.

QUANTA Magazine

QUANTA Balance Sheet as at 31st December 2010

2009			2010	
£	£		£	£
<u>CURRENT ASSETS</u>				
0		Prepayments and Debtors (RWAP Loan)	1,635	
Bank Accounts:				
79		Current Accounts & PayPal Account	673	
9,846		Deposit Account	7,215	
0		Cash in Hand - Treasurer	14	
<u>9,925</u>	9,925		<u>9,537</u>	9,537
<u>CURRENT LIABILITIES</u>				
<u>468</u>	468	Accrued Charges and Creditors	<u>596</u>	596
	<u>9,457</u>	NET CURRENT ASSETS		<u>8,941</u>
	<u>9,457</u>	<u>TOTAL ASSETS (LIABILITIES)</u>		<u>8,941</u>
<u>FINANCED BY ACCUMULATED FUNDS</u>				
12,507		Balance brought forward	9,457	
<u>(3,050)</u>		Surplus/(Deficit) of Income for the Year	<u>(516)</u>	
	<u>9,457</u>			<u>8,941</u>

AUDITOR'S REPORT TO THE MEMBERS OF QUANTA:

Note: These Accounts are unaudited at the time of going to press.

I have examined the Income and Expenditure Account and Balance Sheet for the year ended 31st. December 2010 and confirm that they are in accordance with the books and vouchers of the association and the explanation and information provided.

Signed: Elizabeth Armstrong

Name & Address: Elizabeth Armstrong

32, Westmorland Road,
Urmston,
Manchester.
M41 9HL

QUANTA Magazine

Minutes of the QUANTA Annual General Meeting held 18th April 2010 at the BRC Community Centre, Birmingham, B28 9AA

The meeting started at 2.00 pm

Members present: Sarah Gilpin (Chairman), John Gilpin (Treasurer), Keith Dunbar (Web Administrator), Mike Bedford White, Alan Hunt, Rich Mellor, John Hall, George Gwilt, Alex Wells, Chris Grogan, Geoff Wicks, John Mason, Anthony Hill, Derek Stewart, Nigel Herring and Dave Buckley.

Apologies: Alison Southern (Secretary), Dilwyn Jones (Helpdesk and News Editor), John Southern and Alexia Southern

The Chairman opened the meeting and welcomed all those attending.

The minutes of the Annual General Meeting 2009 had been circulated to all members in the A.G.M booklet. It was proposed that the minutes should be accepted as a true record of the meeting.

Proposed by – John Mason

Seconded by – John Hall

Carried by a show of hands

The Annual report, Treasurer's report and the Membership report had been circulated in the A.G.M booklet and additional copies were available at the meeting.

The Annual Report – Sarah Gilpin

The Chairman gave a brief summary of the events of the last year. She added her thanks to the service given by John Gilpin, the retiring Treasurer/Membership Secretary.

The Treasurer's Report and Annual Accounts – John Gilpin

The treasurer high lighted some of the points in his report, particularly the items referring to 'QL is 25'. The actual expenditure was sufficiently lower than the budget that Committee were able to cover the costs of the Silver Jubilee issue of the magazine and make a donation to the celebratory event organised by Urs Koenig in Lucerne. John Gilpin therefore asked that the Annual Accounts should be approved.

Proposed by – Mike Bedford White

Seconded by - Chris Grogan

Carried by a show of hands

QUANTA Magazine

The Membership Report – John Gilpin

The Membership Secretary pointed out that there had been a loss of three members, but that those accepting the electronic magazine had risen from 22 to 30.

The Election of the Committee for 2010/11

The proxy votes were counted, 6 for the nominated committee and 3 for the Chairman's vote. As the number of nominations did not exceed the number on the committee, all were duly elected

Chairman: Sarah Gilpin

Secretary: Alison Southern

Treasurer and membership Secretary: No nomination

Helpline, News Editor and Librarian: Dilwyn Jones

Web Master: Dan Abbott

Web Administrator: Keith Dunbar

Committee Member: Dave Buckley

The treasurer expressed the Committee's thanks to our auditor Mrs E R Armstrong for the work she has done. It was put to the floor that as Mrs Armstrong is willing to continue as auditor for QUANTA her appointment should be confirmed

Proposed – Dave Buckley

Seconded – Nigel Herring

Carried by a show of hands

The amount to be levied during 2010 as membership subscription was agreed by those present to remain at £14.00 with the postal surcharges as approved in 2009.

The floor was opened for discussion on the level of financial support to be given to Sub-groups. The Committee had received a request for support from the London Sub-group, who was not represented at the meeting. There is no written clause in the Constitution about such support, but in previous years a maximum of £100.00 has been given upon request from a sub-group. For a full report of the discussion and the outcome see the April/May 2010 issue of the magazine.

It was suggested by John Mason that as the Committee has no volunteer for the position of Treasurer that the Committee should, at the meeting following the A.G.M. co-opt John Gilpin into that position for one year only. The Chairman thanked John Mason for his suggestion.

The meeting closed at 3.15 pm.

QUANTA Magazine

QUANTA Membership Secretary's Report for 2010

As at 31st December 2010, (this date chosen at the request of members present at the AGM 2007 in order to give a consistent annual figure) the QUANTA Membership was made up as follows: (2009 figures are given in brackets for comparison). Figures given as nnE denote the number of members taking the Electronic version of the Magazine. All other members take the Printed copy which is posted to their home address.

	UK		OS	
Full Members	133	15E (141 18E)	22	9E (20 9E)
Associate Members	1	1E (1 1E)	Nil	(Nil)
Honorary Members	6	2E (6 2E)	2	(2)
Other Members	7	3E (6)	1	(1)
TOTALS	147	21E (154 21E)	25	9E (23 9E)
Combined Total	172 30E (177 30E)			

John Gilpin
Honorary Membership Secretary.

QUANTA WEBSITE REPORT

Dan Abbott & Keith Dunbar

For several years Dan has been sitting on the committee as Webmaster, but having one person try to manage a site, having to upload each change made and not having any way to track previous pages an alternative was investigated by Keith and Dan and the one that seemed most appropriate to use was Typo3.

Typo 3 is a complex and powerful Content Management System (CMS) which will allow several editors to contribute to the site which would mean no bottle-neck when content needs to be updated, and if any editors of the site see a mistake on a page they can edit they can fix the issue there and then.. It will also allow traders and sub-groups to have direct control over their individual pages, and editors will be able to see the structure of the pages that they can edit. It will also give us a members area from which where magazines and source code can be downloaded.

The majority of the committee is pleased with Typo 3, but Keith and Dan have found it quite a challenge to patch and upgrade the software. Our existing internet service provider (ISP) does not have the specialist knowledge to support Typo 3, and we have been unable to upgrade to the latest version of the CMS as they do not support PHP 5 or MySQL 5. An incompatibility with the news module resulted in the news section of the site going stale.

In common with many free, open source content management systems, Typo 3

QUANTA Magazine

is extremely powerful but requires a lot of tweaking and customisation to reach it's full potential. In February 2011, the QUANTA committee agreed to move to a specialist ISP, with a track record of hosting and supporting Typo 3 websites.

The WEC (Web Empowered Church) offer a managed hosting service to non profits and faith organisations running Typo 3 sites, and their service is backed up with 24/7 technical support.

This will free up the committees' time to focus on content and design, rather than worrying about the complexity of this powerful CMS.

The WEC service includes daily backups of the QUANTA website and members' area, automatic upgrades of Typo 3 software modules, access to online training materials, and a user forum so we can share best practice with other Typo 3 users around the world.

WEC have developed an impressive templating engine, which will enable us to alter the look and feel of the QUANTA website by changing a few background images and style sheets.

I am developing different templates for the QUANTA homepage, each of the landing pages, and the detailed content pages.

Best of all, WEC have written some custom plug-in modules:

- A threaded discussion forum for the members' area,
- A Google map plugin so we can show the location of QUANTA subgroups, workshop venues and events
- A volunteering module to enable members to indicate their areas of interest and ability to help
- A mailing list module to enable us to circulate a regular e-newsletter to members
- Interactive photo galleries, so we can promote QUANTA events and workshops

Additional features that will be provided:

- Members Area, archived copies of magazines and source code will be available for members to download
- News updated frequently, news can be submitted to the committee for publication on the website or when the committee spots some important news it will be published
- Multiple editors, additional editors can be brought online to edit content at any time. Do you fancy writing an article or a news story?

The new Typo 3 content editor is much easier to use and integrates closely with Microsoft products like Word .

WEC have hugely simplified the Typo 3 template engine. One simply selects a skin and choose a template using the template wizard.

QUANTA Magazine

NEMQLUG INVITE YOU ALL TO JOIN US

In MANCHESTER for a 2-day WORKSHOP and AGM

Venue: "The Endeavour", 3rd Davyhulme (Lostock) Scout Headquarters,
Conway Road, Davyhulme, Manchester. M41 0TF

Saturday 16th April at 10.00 pm to 5.00 pm
and Sunday 17th April 2008 at 10.00 am to 4.00 pm

The AGM will be held at 2.00 pm Sunday April 17th 2011

You are all invited to join us at a dinner on Saturday, please book your place by sending a £10.00 deposit payable to "QUANTA", to Mrs S Gilpin, 181, Urmston Lane, Stretford, Manchester M32 9EH by 9th April 2011.

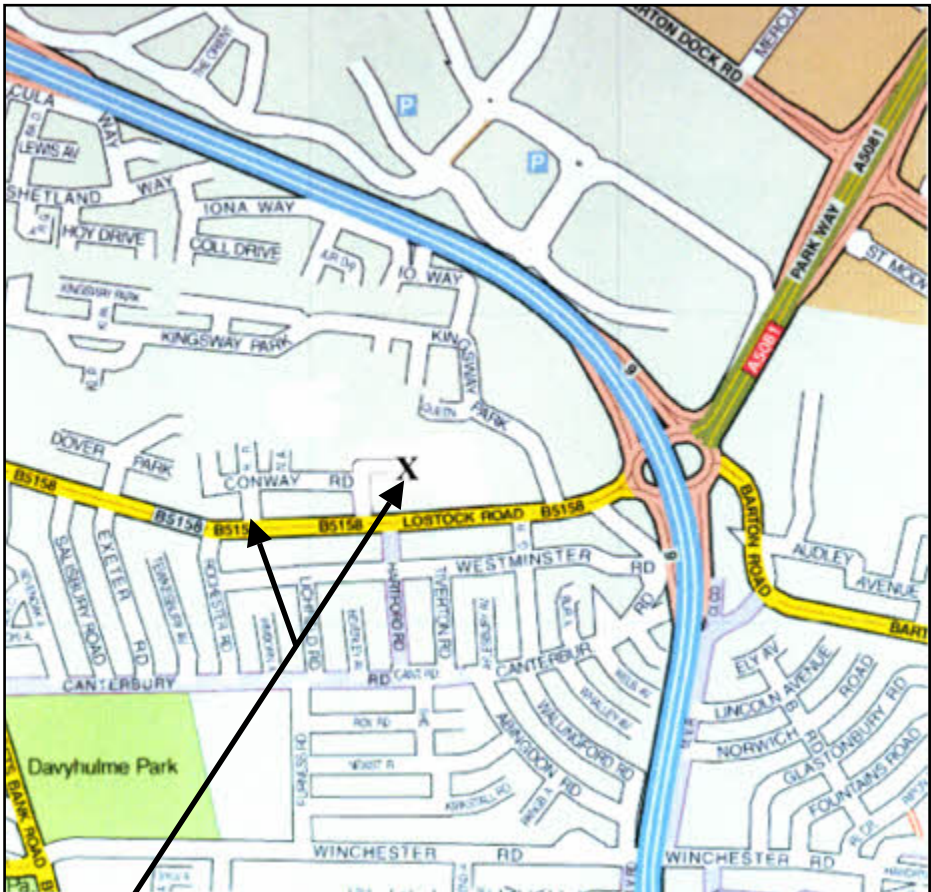
Hotel accommodation as usual is in short supply as there is a Manchester United football match on that weekend. Our usual hotels are already filling up rapidly. There are currently vacancies at the Mersey Farm Premier Lodge in Sale, Tel No 08701 977 179 and at The Thistle wood Hotel. 203 Urmston Lane, Stretford, Manchester, M32 9EF, Tel 0161 865 3611 bed & breakfast only.

Directions to the venue:

By Road; From the M60, Leave at Lostock, Junction 9, and take Lostock Road, towards Urmston. Pass the George H Carnall sports centre on the RHS and take the next turn to the right, Conway Road. "The Endeavour", 3rd. Davyhulme (Lostock) HQ is at the bottom of the road on the right hand side. See Map on next page. The first entrance to Conway Road is currently closed by roadworks, but these are supposed to be finished before the A.G.M. If not then the next right turn is also Conway Road and another right will lead you back towards the venue.

Dilwyn Jones has arranged a programme of presentations and demonstrations for the weekend. If you have any topics that you would like to know more about, please let me know. The repair table will also be available if you wish to bring any sick QLs along.

Alison Southern.
NEMQLUG Secretary



Note: Conway Road breaks on to Lostock Road at two places. If the entrance to Conway Road nearest to the M60 Motorway is blocked due to Road Works, continue to the other end, then, having turned into Conway Road take the first road to the right (still Conway Road) and at the end of the road bear forward left onto the unmade up track and the car park and “The Endeavour” Scout Headquarters is through the metal gate about 25 yards along the track. X marks the Venue.

FOR SALE

QL TRUMP CARD for Sale

Offers to John Butterworth Tel:01257 – 411 440 or

By email to: editor@quanta.org.uk

If anyone has QL-related news for inclusion in this column, please send it to me preferably by email to:

news@quanta.org.uk

(alternatively via the contact details on page 2 of the magazine).

GWASS Update

George Gwilt writes that he has updated his GWASS assembler program for the QL:

A new version of GWASS is now available from my website

<http://gwiltprogs.info/>

This allows the input of octal numbers by using the prefix AT (@).

Thus 46 can now be entered as one of:

46 (decimal)

\$2E (hexadecimal)

@56 (octal – base 8 numbers)

%101110 (binary numbers)

Non Stick Glue

Dave Park in Texas has set up a pair of new QL sites which seek to bring together technical data on the QL and software for the QL.

The website has sections on hardware, software, photos, a “wanted items” page and a QL users survey. The software page includes some advance details of software which Dave intends to release over the coming months, such as an Air Traffic Control Simulator he intends to release in May.

The Non Stick Glue site is already up and running at:

<http://www.nonstickglue.com> .

QUANTA Magazine



Figure 1 – The “Non Stick Glue” website

The second site at:

<http://www.sinclairQL.com>

was not active at the time of writing, but due to come fully online by 12th March. This site will deal with Dave’s hardware projects and a possible forum to be set up.

QL Community Survey

Dave Park also set up a quick 24 question survey of QL users in February. Although it closed at the end of February (so participants probably included only members of the QL-users mailing list and QL Forum), it did provide a number of interesting results with even he admitting (on 16th February, by which time he had received 55 responses, well before the survey closed) that “The results so far have definitely upset a few of my pre-existing views. Fascinating.” The survey finally drew a total of 74 responses (surprising perhaps, considering the fairly small user base who knew of the survey, mostly those on the QL-users mailing list and QL Forum), although not all respondents completed all the questions. I don’t want you to have to take my interpretation of the results in the News column, I’d rather you read the full results yourself! The results of the survey are available to view online, on Dave’s website at:

http://www.nonstickglue.com/QL_Hardware_Library/Survey.html

He plans to conduct another survey in April (closing date 30th April). It is hoped that this will focus on software, emulators and community websites. Obviously, the more people who take part, the more accurate the results should be – QL organisations may be able to use the results to

QUANTA Magazine

identify specific future policies and actions, for example. Dave says: “No personal information is collected (unless you volunteer it) and I will not collect any identifying information or include it.” He also welcomes input in the form of suggestions for more questions to ask in the survey. This poll can be accessed online at:

http://www.kwiksurveys.com/?s=IHJNOG_e0e276e5



Figure 2 – QR code for survey

From 1st April. Alternatively, use the shorter URL

<http://bit.ly/hWhuca>

or if you are accustomed to using QR (Quick Response) codes use this. (see Fig 2.)

If you have never heard of QR codes before, here's a brief explanation from Wikipedia:

A **QR Code** is a specific matrix barcode (or two-dimensional code), readable by dedicated QR barcode readers and camera phones. The code consists of black modules arranged in a square pattern on a white background. The information encoded can be text, URL or other data. Common in Japan, where it was created by Toyota subsidiary Denso-Wave in 1994, the QR code is one of the most popular types of two-dimensional barcodes. QR is the abbreviation for Quick Response, as the creator intended the code to allow its contents to be decoded at high speed.”

Ser-USB Update

Adrian Ives has issued regular reports on progress with this device in recent weeks. Although sometimes mentioned by the name USB-Wiz, this name belongs to those who make the card and the QL implementation of it will be called Ser-USB.

The software is now approaching completion (March) and includes a number of extensions to S*BASIC to address the device, a formatting routine for the plug-in memory cards (which is said to work as a background process, so that the QL command line returns almost immediately). The format of the formatted memory card is similar to that of a Qubide drive. The finished code should include support for mounting/unmounting partitions

Sinclair QL Re-Releases RWAP Services

We have been working hard to safeguard the future of the Sinclair QL through beginning to compile a repository of QL titles.

The repository enables people to see what software was produced for the Sinclair QL and also to be able to purchase working copies when their microdrive cartridges fail. Where we can, we obtain permission from the copyright holder to re-release items on the market.

This has enabled us to bring some of the titles back to the market as well as re-kindle interest in the Sinclair QL and its emulators.

Old favourites brought back to life include:

Jungle Eddi
The Lost Pharaoh
Pengi
Microdeal's Flight Simulator
Microdeal's QL Hopper
Microdeal's The King
Cuthbert in Space

We still retain our existing catalogue , including:

Open Golf
Stone Raider II
Hoverzone
Deathstrike
Flightdeck

All games are available on disk or for use with Q-emulator on the PC for **ONLY £5 each.**

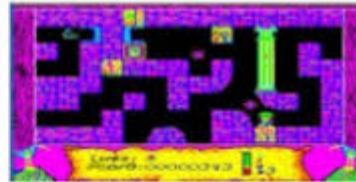
Microdrive versions also available - £10 each

Visit the QL Wiki for more details on software, books and hardware for the Sinclair QL:
www.rwapadventure.com/ql_wiki

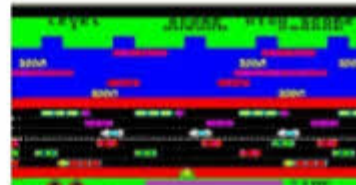
RWAP Software
3 Dale View Court
Fulford
Stoke-on-Trent
Staffordshire
ST11 9BA
Tel: 01782 398143
Email: rich@rwapsoftware.co.uk
Website:
www.rwapsoftware.co.uk
or sellmyretro.com



QL Pengi by Jochen Merz



The Lost Pharaoh by Talent



QL Hopper by Microdeal



The King by Microdeal



Cuthbert in Space by Microdeal

Working to safeguard the QL for the future

www.rwapsoftware.co.uk

QUANTA Magazine

too. Adrian has been at pains to point out some limitations though, e.g. when addressing a USB flash drive or internal SD card slot you only have one serial channel to the Ser-USB device, so connecting a USB device such as a keyboard might result in that device being blocked while the serial port channel is being used to write to the memory card.

In mid-February, Adrian announced that the current software build at the time had support for the SuperHermes SER3 fast serial port and ran happily on Aurora with Super Gold Card, but that an unexpanded QL was problematical due to both slow serial ports and insufficient memory for adequate buffers. Then on 22 February he reported that development was now frozen while he finished testing to satisfy himself it was good enough to put out for beta testing.

Some pictures of the testing stage can be viewed at:

<http://img202.imageshack.us/q/serusbtesting012.jpg/>



Figure 3 – A picture of the Ser-USB prototype.



Figure 4 – The QL-style True Type font.

QL True Type Font

Lee Privett has designed a True Type font which resembles the QL system font. It's actually based on the one in the version JS ROM. I have also converted this to ATM type 1 and from there to Proforma format so it can be used in programs like Line Design

<http://www.dilwyn.me.uk/fonts/index.html>

QUANTA Magazine

PCML Disk Interface Manual

Lee has also produced an improved manual for the PCML disk interfaces, available as both PDF and Word .doc file (the latter is around 7MB in size, although the former is much smaller). As well as improving the appearance of the original typed manual, he has corrected a few typos in it. The new version of the manual is available to download from:

<http://www.dilwyn.me.uk/docs/manuals/index.html>



Figure 5 – the replacement PCML disk interface manual.

MESS

Back in Volume 25 Issue 3 (June/July 2008) I wrote an article about the MESS Multiple Emulator Super System, which includes an emulation of a Sinclair QL, among about 250 other systems. At the time, I was a bit disappointed I couldn't save files or load microdrive images. I never did manage to get that part of it working and abandoned trying to use it.

Well, towards the end of March Phill Harvey-Smith wrote that he was trying to get an emulation of Trump Card and Sandy Superdisk working on it, which gave hope that the file handling and one or two other issues might be

QUANTA Magazine

made easier to use. I asked Phill if he could send me some details on his work, and here's what he sent me:

“The Trump card emulation is done, it can read and write all the floppy images that I have thrown at it (dumped from my real QL disks, using the linux dd command to create a raw sector dump). I also have emulation of the Sandy Superdisk interface working as well, though obviously this only supports a maximum of 640K of memory. However the Sandy interface emulation also supports the built in parallel port printer interface, this output can be re-directed to a file, so is an easy way of getting output from the emulated QL to the underlying operating system.

These updates are available to anyone who can build mess from source code, by checking out the code from the public subversion archive

(see www.mess.org for details),

or should be in the next binary release.

You will of course need an updated QL romset with the trump card and superdisk roms in but these should make it into the wild after a while....”

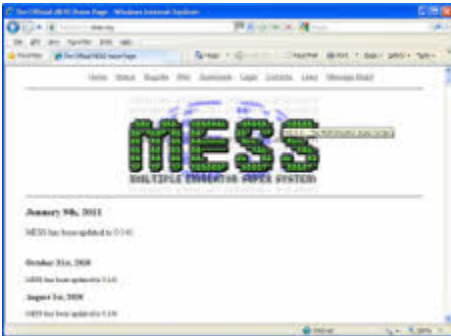


Figure 6 – The MESS website at www.mess.org

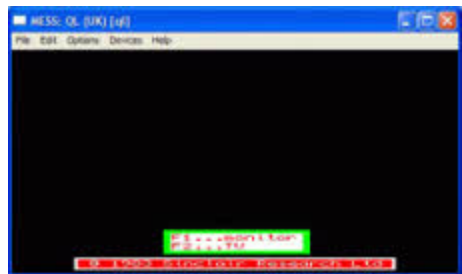


Figure 7 – The MESS QL emulator in action

QL Image Repository

Lee Privett writes:

With the recent addition to the limited number of good QL related web sites and pages of the QL-Forum & the QL Hardware Library I wanted to add my own contribution that was complementary without being too

QUANTA Magazine

repetitive. One of the difficulties I found coming back to the QL was a lack of reasonable sized and wide range of images of QL related equipment, especially when I wanted to include them in articles & documentation etc. So I decided to create my own QL Image Repository of high resolution images for the QL community to use without any restriction. I also wanted to put them in categories so it was easy for people to find something for their own projects etc. You can find the images here at:

http://www.flickr.com/photos/sinclair_ql/

and by the time you read this there should be in excess of 100 photographs and climbing. If you use them in anyway shape or form for an article or other such documentation I would appreciate a mention, if you don't, well that's fine as well.



Figure 8 - The QL Image Repository

Gold Card Battery Replacement

With some Gold Card users finding that the battery has come to the end of its life, Dave Park has designed a replacement holder for a common CR2032 battery. With the original SAFT 40LF220 3V lithium batteries now discontinued, he has designed a simple board which



Figure 9 - The SAFT 40LF220 Gold Card battery

acts as an adaptor for the CR 2032 batteries. Critically, the adaptor meets all the physical power and dimension requirements of the original battery. It can be used in any place a 40LF220 was originally used. Using surface mounted pins and a low-profile surface mounted battery holder was the only way to ensure the new battery would not short against neighbouring components and also fit into the limited space available when the Gold Card is inserted in a QL.

QUANTA Magazine

The adaptor is expected to be available in April 2011 and expected to cost about \$US 25 or about £20 including taxes.

Dave is also looking into producing some more Minerva boards and assembling some remaining stocks of the TF Services MPlane backplane device.

New QL Blog

A new QL blog called “Back To The QL” has been started up by Lee Privett. The name is something he has attached to himself influenced by three of his favourite films starring Michael J Fox. A blog is a kind of online diary or journal – the term comes from a fusion of the words “web” and “log”. Read about his experiences returning to the QL scene for the first time since he left in the late 1980s at:

<http://backtotheql.blogspot.com/>



Figure 10 – The “Back To The QL” blog.

QUANTA HELPLINE - Q & A

Dilwyn Jones

Members wishing to submit helpline requests via email can use the email address:

helpline@quanta.org.uk

or if you prefer to use traditional post, please send the helpline request to me via the address printed inside the front cover of the Magazine.

QUANTA Magazine

Obviously, we cannot guarantee to answer every query we receive, but we will do our best! Where we have been unable to answer the queries, we may print the help request as an open request in the Magazine to ask if any of the readers can come up with a solution. And, of course, if readers feel that they have a better solution than we came up with, or would like to correct any errors we make, please write to us!

Q. I have always found the loading order of things in a Boot file totally incomprehensible. Are there any guidelines you could offer me?

A. I covered this in a past article. Volume 27 Issue 1 page 12 onward, although it was a fairly small part of a long article, so I'll try to explain it further here.

Basically, there is a logic (albeit a little bit weird when you are not familiar with it). Lightning or Speedscreen accelerators, if you use them, need to go first because they do some changes to text and graphics output which some extensions might need to know about when they are started in turn, then Toolkit 2, then pointer environment if using QDOS, then other toolkits or extensions and so on as listed below. This is something that experience and regular use of the QL helps you understand. The order of items in a boot file is not something you can easily figure out if you don't have the experience which comes from regular use (or good advice from a friend!)

You need to be aware that things vary slightly depending on whether you use QDOS or SMSQ/E, and whether you use pointer environment or not.

I. If Using Pointer Environment With Qdos:

1. Lightning or Speedscreen if used. These change a lot of system basics like graphics and text routines, safest to put them first.
2. Toolkit 2. Some versions might need a TK2_EXT command to activate the toolkit after it has been loaded (the manual usually explains this).
3. Pointer Environment - ptr_gen, wman and hot_rext (in that order - wman won't work properly unless it first finds ptr_gen).
4. Menu Extension (Jochen Merz). Needs to be after pointer environment but before other things which might use it.
5. Other toolkits and extensions. Difficult to give advice on the order of each toolkit, since most don't mind what order they come in. Some may say in their instructions that they need to go before toolkit x or after toolkit y – this is something that only reading the instructions and experience will teach you.

QUANTA Magazine

6. Define hotkeys and any HOT_RES, HOT_CHP etc. Hotkey System commands to load programs resident in memory.
7. After all extensions have been loaded and hotkeys defined, add a HOT_GO command. This has to be after any RESPR or LRESPR commands because HOT_GO starts a job running to make hotkeys work. RESPR and LRESPR won't work properly if a job is already running.
8. Anything else the BOOT program needs to use (e.g. set QL clock, special disk commands, DEV or SUB settings, PRT_USE and SDUMP settings)
9. Chain any further BASIC programs with LRUN or MRUN as appropriate.

II. If Using Plain Qdos Without Pointer Environment:

1. Lightning or Speedscreen if used
2. Toolkit 2
3. Other toolkits or extensions (usually, any order, some older ones might be fussy but no hard and fast rules)
4. Anything else the BOOT program needs to use (e.g. set QL clock, special disk commands, DEV or SUB settings, PRT_USE and SDUMP settings)
5. Chain any further BASIC programs with LRUN or MRUN as appropriate.

III. SMSQ/E AND QPC2

1. DON'T try to use Lightning or Speedscreen - SMSQ/e doesn't need them.
2. Toolkit 2 is already in SMSQ/E, don't try to load it, although just a TK2_EXT command will do no harm.
3. Don't load pointer environment files - they are built into SMSQ/E.
4. Menu Extension (Jochen Merz).
5. Other toolkits and extensions. Mostly not fussy about order, except for one or two older ones.
6. Define hotkeys and any HOT_RES or HOT_CHP to load programs resident in memory.
7. After all extensions loaded and hotkeys defined, add a HOT_GO command. This has to be after any RESPR or LRESPR commands because HOT_GO starts a job running to make hotkeys work. RESPR and LRESPR won't work properly if a job is already running.
8. Anything else the BOOT program needs to use (e.g. set QL clock, special disk commands, DEV or SUB settings, PRT_USE and SDUMP settings)
9. Chain any further BASIC programs with LRUN or MRUN as appropriate.

Hope that's a little use in explaining it. Years ago, I used to find the boots a bit confusing (like the old autoexec.bat and config.sys and so on in

QUANTA Magazine

DOS). Over the years I just got used to it, then one day someone (I think it might have been Jochen Merz) explained the logic to me and it all suddenly fell into place. Another good source of information on this was the Qpac2 manual. although that can be rather heavy going in places.

Q. I'm sure that I once saw a QL with a Gold Card having 4 floppy disk drives connected. I can only connect two drives to mine. Is this possible, or was I seeing things?

A. A standard Gold Card only allows up to two disk drives to be connected, while a Super Gold Card allows up to four disk drives. The Super Gold Card board has 2 disk drive connectors, and twin drives can be connected to both sockets, giving a total of four. Maybe the system you saw had a Super Gold Card? Another possibility is that if it was a standard Gold Card, or maybe even a particular version of the Trump Card, with the addition of a small expansion board (see picture below) manufactured by Miracle Systems Ltd which decoded the addressing for the disk drives and had two disk drive sockets allowing two twin disk drives to be connected, total of four drives. These didn't necessarily have to be the same type of drives either, the interfaces were very forgiving of mixed drives – for example, you could end up with a twin 3.5 inch drive and an old 5.25 inch drive for transferring software from the old 1980s 5.25 inch floppy disks!

Q. Is it possible to connect a flash memory card to my QL? I have a RomDisq, but this has only 4MB.

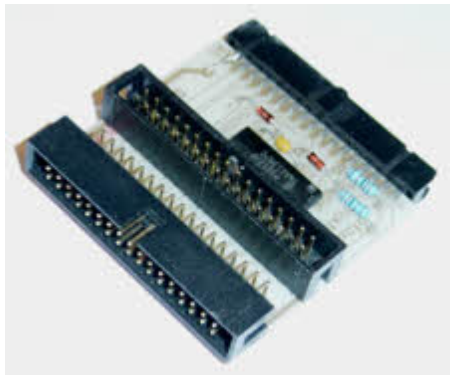


Figure 1 – The 4-drive adapter for Gold Card, from Miracle Systems

A. Good news on several fronts here.

The first is that Peter Graf has been designing a small SD card interface which plugs into a QL and he has been seeking opinion on how it would best plug into a QL. One suggestion was by using a bidirectional

QUANTA Magazine

parallel port like the one on a Super Gold Card. Another idea was to build it into one of the Microdrive slot positions to mount it and it would connect to another part of the QL circuit board without trying to use the Microdrive circuitry.

Secondly, Adrian Ives has been busy designing what he calls a Ser-USB device using USB-Wiz boards. This offers both a SD card slot and a USB port offering the use of USB pen drives (also called Thumb drives in some countries). This connects to the QL via a serial port.

If you have a Qubide IDE interface for connecting hard disk drives to a QL, you may be able to get hold of memory card readers which can plug into an IDE socket and work pretty much like a hard disk. They are not that common and can be a bit expensive to buy, but at least they would work with a modern Qubide card. Note: it can be hit and miss – not all such IDE flash memory card readers work well with Qubide, so take advice before buying or if possible confirm that you will be able to return the device if it fails to work with Qubide or if it turns out to be no good for you. If you buy goods over the internet, the Distance Selling Regulations may offer some cover and the right to reject goods bought “blind” over the internet as long as you tell the trader concerned quickly (usually within a few days) that you are rejecting or wish to return the goods for a refund.

If you are using a QL emulator on a computer which supports the use of flash memory cards, the system may be easier than on a standard QL system. Memory cards usually appear as a standard drive in the list of disk drives on your computer. For example, a PC might have the following drives:

Drives A: and B: are usually floppy disk drives

Drive C: is usually the main hard disk drive

Drive D: might be a CD-ROM or DVD disk drive (or occasionally a second hard disk drive).

Drive E: might be a flash memory card reader such as an SD card reader. In this case, just think of the memory card as a hard disk drive. If the emulator holds its files in a QXL.WIN on a hard disk, you will most likely be able to format (or copy to) a QXL.WIN on the flash memory card too. A QXL.WIN is a large file on the host computer's filing system which holds all of the emulator's QL files, to all intents and purposes a QL filing system



Independent QL Users Group

World-wide Membership is by subscription only,

Offering the following benefits:

Bimonthly Magazine - up to 52 pages

Massive Software Library - All Free!

Free Helpline and Workshops

Regional Sub-Groups. One near you?

Advice on Software and Hardware problems

Subscription just £14 for Full Membership

PayPal (see QUANTA Web Site),

Cash, Cheques and Postal Orders Accepted

Now in our Twenty Eighth Year

Further details from the Membership Secretary

**John Gilpin, 181, Urmston Lane,
Stretford, Manchester, M32 9EH (UK).**

Tel. +44 (0) 161 865 2872

Email: membership@quanta.org.uk

Visit the QUANTA Web Site

Next QUANTA Sponsored Event

Annual General Meeting 2011 and Workshop

Date: Saturday/Sunday 16th/17th April 2011

Workshop from 12.00 Noon (Doors open 10 am for setting up) to 5.00 pm Saturday

And 9.00 am to 1.30 pm Sunday

Annual General Meeting 2.00 pm Prompt Sunday.

Venue: 3rd Davyhulme Scout Headquarters "The Endeavour", Conway Road, off
Lostock Road, Davyhulme, Manchester. M41 0TF. Near M60 J9.

Full details from Chairman@quanta.org.uk

QUANTA Magazine

which lives in a single file called QXL.WIN within the host filing system – a system within a system.

Q. I recently started using pointer environment and found that the ALT-Enter keypress to recall the last entered line for editing no longer works. I don't use hotkeys, so I can't have done anything to cause it not to work, surely?

A. When you have pointer environment on your system, in particular the hotkey system 2 installed by loading the hot_rext file which is part of pointer environment system, the Alt-Enter keypress is then controlled from what is called the Hotkey Job. This is a small program which runs in the background supervising the hotkeys. This program only starts running when a command called HOT_GO has been entered (usually in a BOOT file). It can be stopped with a command called HOT_STOP and the Hotkey Job can also be removed with the RJOB "HOTKEY". Very rarely, the Hotkey job might fail due to an error. When ALT-Enter fails to work, it is because this program called HOTKEYS has stopped running for whatever reason, or was never activated in the first place. Check that the boot program has a HOT_GO command to start these hotkeys automatically. See the question above about the order of items in a boot program for advice on the best place to put a HOT_GO command, or of course you can manually type in a HOT_GO command to start it all going if you prefer.

LIBRARY CORNER

Dilwyn Jones

Ordering Programs From The Library

For a full guide to ordering programs from the Quanta Library, please refer to Section C of your Quanta Member's Guide. If you haven't got a copy, or have mislaid it, you can view it online. Just go to

www.quanta.org.uk

click on the 'Members Guide (PDF)' link in the blue link boxes on the left.

A list of the programs in the library is contained in the Library Guide, which is already available to download from the Quanta website at the URL

<http://www.quanta.org.uk/index.php?id=44>

QUANTA Magazine

If you only want to order a small number of disks from the Library, and are able to accept them as zipped files over emails, it is actually easier and cheaper for me to send them over the email system to you. It saves the cost of postage (especially for members abroad) and means you get the disks sooner than through the post. The only slight delay will be while I check with the membership secretary to confirm you are a member.

Obviously, if you want many disks, it may become more practical for you to contact me first to check – in other words, revert to Plan A by reading Section C of your Member's Guide.

Roger Godley Programs on PS 09

With the benefit of hindsight, keeping these older versions of Roger's work on enhancing the original Psion QL programs should not have happened. When I added the versions on disks PS10 and PS11, I thought these might prove of background and historical interest. However, they now seem obsolete and long since superseded by newer versions. Accordingly, the programs have been removed from this disk.

Chas Dillon Archive Notes on PS 09

John Gilpin has scanned a printed version of Chas Dillon's "Notes On Psion's QL Archive" booklet from the 1980s, thanks to a paper copy borrowed from John Gregory. Originally published when Quanta was still known as 'IQLUG', or the Independent QL Users Group, and based in Milton Keynes, this 52 page booklet still provides a wealth of information for people wishing to learn to use Archive, so I have added the PDF file to disk PS09, where space was released by the removal of the obsolete programs. You will need to copy this "Archive Notes.pdf" file to a computer capable of reading PDF files to read it. This and Martin Wheatley's Archive documents on disk PS 02 should be very helpful to those trying to learn Archive (see Figure 1).

Mail Merge on PS 09

I have added a program called Mail Merge onto disk PS 09. This lets you prepare a document in Quill or a plain text file, with a list of fields to merge in from an Archive _dbf file (well, an export file to be strictly accurate). This lets you create personalised documents for mailing lists and so on. Say you wanted to send a renewal reminder to all club members that

QUANTA Magazine

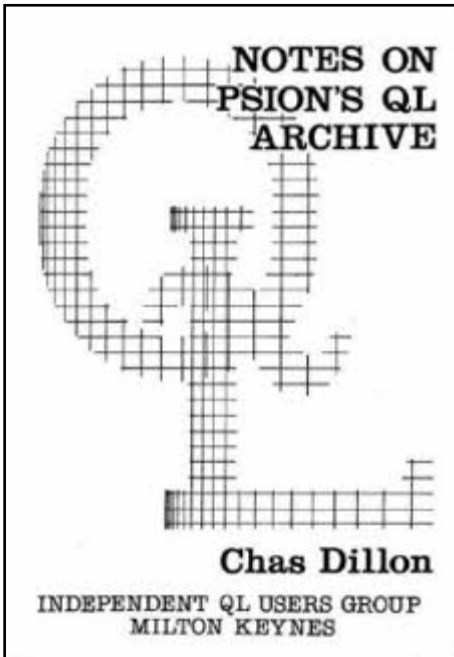


Figure 1 - The Chas Dillon Archive Booklet

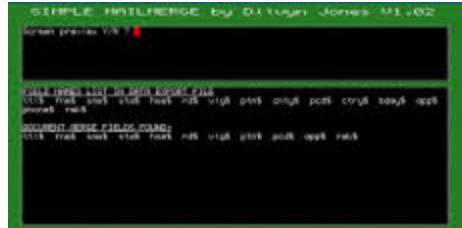


Figure 2 – The Mail Merge program

subscription renewals are due soon. Typing their names and addresses into letters every time would be tiresome and these days the list of members' name and addresses may well be on computer, so let the computer take the strain! By placing the names of archive database fields at the required points in the document, the program takes the required data out of the database and builds a new letter with each member's details automatically entered from the database for each letter. Some simple example files are included. Oh, did I mention it was written by me? Don't let that put you off trying the program, though.

Online Library – Ongoing Saga

In time, when we have completed work on the Members Area of the Quanta website, it will be possible for members to download disks directly from the website, but until then, sending disks as email attachments might be the best way forward for most members, especially those abroad. Work on this part of the website has not got very far because of the on-going problems with fully and properly implementing the Content Management System (CMS) so far, but following a committee meeting in February the decision was taken to move to a paid-for service with better facilities to ensure the Typo3 CMS can run with fewer problems. Obviously, in some

QUANTA Magazine

ways it's back to square one with parts of the website, but once the basics are in place it should (hah, famous last words, Dilwyn!) free up everyone to concentrate on the website content rather than the situation of late where never ending problems seemed to get in the way of implementing a website properly. In other words, once the initial work is out of the way I can realise my dream of an online library for the members of QUANTA, suitable for 21st century Qling.

QL Is 25 Library CD.

QUANTA still has a few copies of the Library CD version produced specially for the QL Is 25 meeting, complete with the "QL Is 25" sleeve labelling. While the Library CD has been superseded since then with the addition of a few disks and so on, these might be of interest to members who collect QL memorabilia. They are available free to anyone interested – one only per member given that only a few copies remain. I will keep one or two copies just for the Quanta archive!

New Librarian Wanted

Finally, I regret to have to say that I announced to the committee in late February that I have resigned as Quanta Librarian. I was trying to do too many things - News, Helpline, Library and occasionally website pages (when the Content Management System allowed it). The rush to get things in to meet the deadline for the current issue before I went abroad in early February, and the subsequent decision to produce another issue with deadline 5th March convinced me the time was right to find someone with new ideas to run the Quanta Library properly and give it the time and attention it deserves. The Library is in need of modernising, especially as it is still intended that in time it will go online for members, which I haven't the time to do.

I'll remain as caretaker Librarian until the AGM when I can hopefully hand the master disks etc over, ready for a new Librarian to take over, if we have been successful in appointing one by then. I will of course assist any new Librarian with getting up to speed on the Library. For now, at least, new Library submissions can still be sent to me or to the Assistant Librarian, David Buckley.

QUANTA Magazine

SUBGROUP MEETINGS

THE WEST MIDLANDS QL USER GROUP

There has been a change of venue, brought about by the owners of the Queens Head pub changing it from a straight pub into an eatery. The new meeting place is called the Bull, the address is 1 Price Street, Birmingham, B4 6JU. Approx 7 minutes walk from Snow Hill main-line railway station and has ample street parking nearby. Meetings remain open to QUANTA members and non-members alike.

After your first meeting you're expected to pay £1 each time towards the organisation and monthly newsletter costs - except once a year when the group pays all those who attend a pound instead ;-)

We provide food twice a year for those who attend the AGM and the group's birthday party) and at meetings we discuss all sorts of things, QL-related and otherwise, usually from about 8:20pm onwards till 10:30 or later. The group owns QL hardware, a disk library and subscribes to relevant magazines. People can join the mailing list for £3.50 per year, even if they can't attend regularly.

Meetings : Meetings are usually on the first and third Monday of each month (but not on bank holidays unless the previous one was cancelled for that reason).

Contact : The contact number remains Mike Bedford White's, on 0121 605 4438, anytime after 11am.

Email: mikebwhite@blueyonder.co.uk

QUANTA DORSET SUBGROUP - Dorset

Meetings are held, on the second Sunday of each month between 2.00 pm and 5.00 pm.

For location please contact:- John Penn-Simkins or John Mason.

John Penn-Simkins 01202 422491 or John Mason 01425 275894

QUANTA Magazine

LONDON QL AND QUANTA GROUP

Meetings are held in the School Room, which is the basement of the Borough Welsh Congregational Chapel, 90, Southwark Bridge Road, London SE1. This is almost opposite the junction with Marshalsea Road, at the other end of which, 5 minutes walk away, is the Borough Underground Station. Free parking is easily available in Southwark Bridge Road for road users, Cyclists are welcome.

Members currently each pay a subscription of £40 per year towards the cost of the hire of the hall and a small additional charge is made for tea/coffee - biscuits are then provided free.

Please bring your QL equipment if possible, all types welcome, e.g., PC portable running emulators. The Group has some systems stored at the venue for its use. In addition, there are lots of donated second user equipment, books, magazines, etc, available for purchase.

Time: 2.00 pm. to 5.00 pm., on the second Sunday of the month. No meetings are held in December / January - winter break, or July / August - summer break, giving 8 meetings a year.

Malcolm Cadman: Tel: 020 8691 5780

email: QL@mcad.demon.co.uk

NEMQLUG - THE NORTH EAST MANCHESTER QL USER GROUP

Meetings are held at 181, Urmston Lane, Stretford, Manchester. M32 9EH (Near Junction 7 of M60 Motorway - Was Junction 7 M63 Motorway). Our informal meetings start at 7 p.m. and finish at 11 pm. All welcome.

Meets on the last Thursday of each month (except December).

John/Sarah Gilpin 0161-865 2872 (thegilpins@btopenworld.com)

QUANTA Magazine

SCOTTISH QL USERS GROUP

SQLUG meets at George Gwilt's home every second Sunday in the month. Please contact George Gwilt before coming to get the location.

Gdgqler@gmail.com

SOLENT SUBGROUP

Meets at Botley Market Hall, all welcome. Park at the back and use side entrance.

1st Saturday of the month from 2.00 pm to 6.00 pm.

Graham Evans, Tel: 023 8040 3350.

SURREY QUANTA SUBGROUP (SQSG)

The group is currently trying other venues in the Leatherhead - Epsom area. If you plan to attend but do not get our emails, please phone or email Ken Bain for the latest location.

Meetings are 8.00 to 10.00 pm. On the last Wednesday of each month except December.

Ken Bain - 01932 - 347 432 (to midnight), kenb@bcs.org.uk

SUSSEX QL USER GROUP

Currently without a meeting place, anyone interested should contact Keith Mitchell or Roy Wood.

Roy Wood, 01273 430501 or Keith Mitchell, 01903 742263.

Coming soon!



QL Today Volume 15
Issue 3
Feb. - April
2011
ISSN 1432-5454
The Magazine about QL, QDOS,
Sinclair Computers, SMSQ...

44
Pages!

**USB and SD-Cards
and the QL -
the hardware exists
and the author writes
about the development
in this issue!**

www.QLToday.com

**The issue will be ready as scheduled
in the second half of March - and
jam-packed with news and inter-
esting articles!**

**Issue 1 and 2 are still available, and
if you have not subscribed yet, you
can do so: www.QLToday.com**